



SEED Health Education

“Mind, Body, and Relational” Course
Specially Designed for Children, Youth, and Caregivers



Teaching Features



A Multi-disciplinary Proven Method

Partnering with the World Health Organization’s “Global Sustainable Preparedness Support Network”, we bring together insights from over ten fields—including medicine, psychology, mindfulness, and disaster prevention—and turn these evidence-based methods into practical learning experiences that inspire real behavioral change.



Practice Health and Justice

Tailor-made for high-risk children in Hong Kong (including low-income, special educational needs, and ethnically diverse groups), and their families and schools. We aim to cultivate an inclusive community where every child can thrive with equal rights to health.



Compassion as Foundation

We practice a ‘trauma-informed’ spirit and partner closely with schools and organizations, hoping to deeply integrate a child safety network into daily life with shared effort. Together, we cultivate a safe and inclusive learning environment, nurturing children’s emotional awareness, internal resilience, and sense of security. We also train caregivers to be trusted adults in society.



Remarkable Impacts

Being one of the partners of the Education Bureau’s “4Rs Mental Health Charter”, our service is based on prevention and empirical evidence. We hope to motivate behavior change in children, caregivers, and educators / organization staff, aligning with the charter while safeguarding the principles of child protection and crisis preparedness.



Evidence-based Teaching Method

Providing long-term and effective community support through unique and personalized learning tool



Learning through Playing

Participants engage in a series of playful learning, reflection and practice to enhance their continuous self-awareness. They can implement what they learn in class into daily practice, thereby promoting health and long-term behavioural change.



Long-term Support

Long-term support for participants are provided through a combination of face-to-face lesson, online platform and a series of follow-up activities. Participants can continuously practice healthy behaviours for themselves and family before, during and after the course.



Multicultural Learning Resources

SEED Course materials are currently available in different languages (including English, Cantonese, Mandarin, Nepali, Urdu, Bahasa Indonesia, Hindi, and Tagalog). This allows participants from different cultural backgrounds to practice what they learn in class into real-life situations at ease.

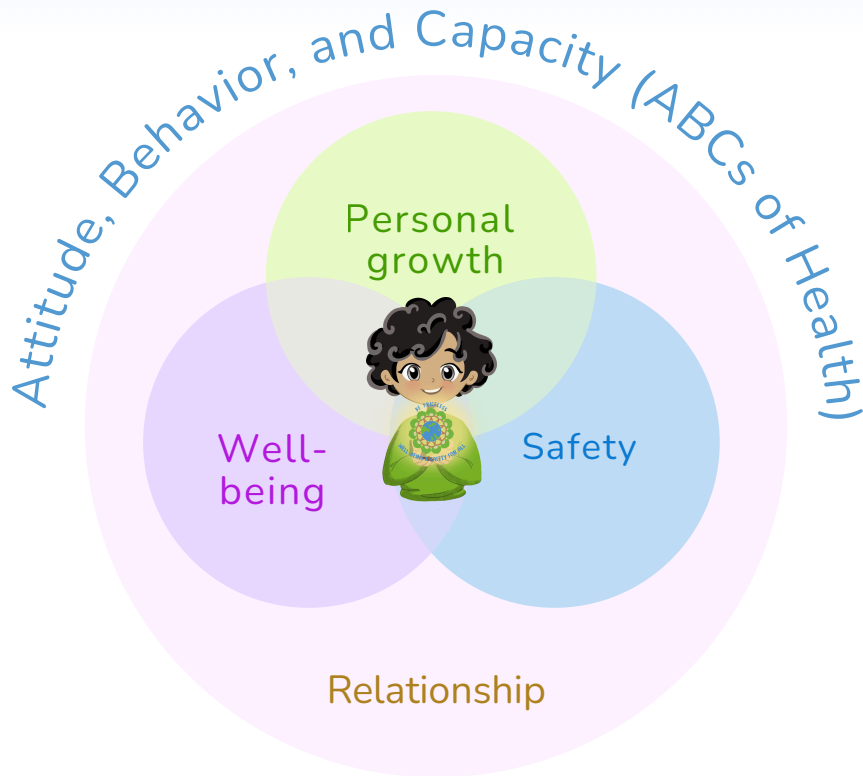


Adopt the United Nations Disaster Risk Reduction Framework

SEED courses' content, which uses a progressive approach, is based on the United Nations' Disaster Risk Reduction framework. Children and caregivers can learn the potential threat and the extent that they may faced, thereby practice prevention, preparation, response, and recovery from different risks.



SEED Course Structure



Courses can take place at the partner's center OR the Be Priceless Learning Center



The number of participants, time, and lesson sections can be adjusted based on partnership and service targets' needs (e.g. special educational needs)

Target	Class Size	Suggested no. of hours and plan	Supported Language
4-6 year-old children	10-15	12 hours (1-1.5 hours per section)	Chinese/ English
7-11 year-old children*	15-30	12 hours (1.5-2 hours per section)	Chinese/ English
12-17 year-old children*	15-30	12 hours (2 hours per section)	Chinese/ English
Caregivers*	20-40	8 hours (2 hours per section)	Chinese/ English/ Indonesian
Educator/ Organization staff	20 - 80	8 hours (4 hours per section)	Chinese/ English

*ZOOM online lessons can be provided

Children and Youth SEED Courses Outline



1 I am a growing seed

- Establish a basis for health and safety
- Adverse and positive external influences
- Controllable and uncontrollable factors

2 Positive ways of seeing myself

- Discover inner potential
- Enhance Self-Worth
- Growth mindset & resilience

3 Risk reduction

- Understand children's rights
- Practice Prevent, prepare, respond, and recover from risks
- Prepare safety plans to reduce risks

5 My mind and body belong to me

- Learn to set up personal boundaries
- Safe and unsafe secrets
- Grooming and violent behaviours
- Practice calling a helpline
- Equity and mutual support

4 The pause

- Practice emotion regulation strategies

6 Mental health and well-being

- Observe and understand my emotions
- Explore the connection between the brain and emotions regulation

7 Stop exploitation

- Child exploitation
- Types of human trafficking
- Practice how to Prevent, prepare for, respond to, and recover from exploitation risks to protect oneself

8 Interpersonal relationship and compassion

- Develop compassion for self, others, and the community
- Navigate peer pressure
- Master active listening skills

9 Finding my true self

- Search for self-worth
- Learn to set goals
- Break down goals and stacking habits
- Learn to make good decisions for growth



Modules 1-6	Modules 1-7	Modules 1-9
Ages 4-6	Ages 7-11	Ages 12-17
For Kindergartens	For Primary School	For Secondary School

Caregivers' SEED Courses Outline



1

Relationship

- Guiding Principles of Constructive Parenting
- Compassionate communication
- Asking and telling
- Active listening
- Praising children



2

Personal Growth

- Caregivers' influences on children
- Brain's neuroplasticity
- Learn the growth of neural networks in adolescents
- Explore inner strength
- Support children for growth mindset and resilience



3

Well-being

- Practice letting go
- Cultivate self-care habits
- Observe and understand feelings
- Emotional regulation strategies
- Explore brain and emotional regulation



4

Safety

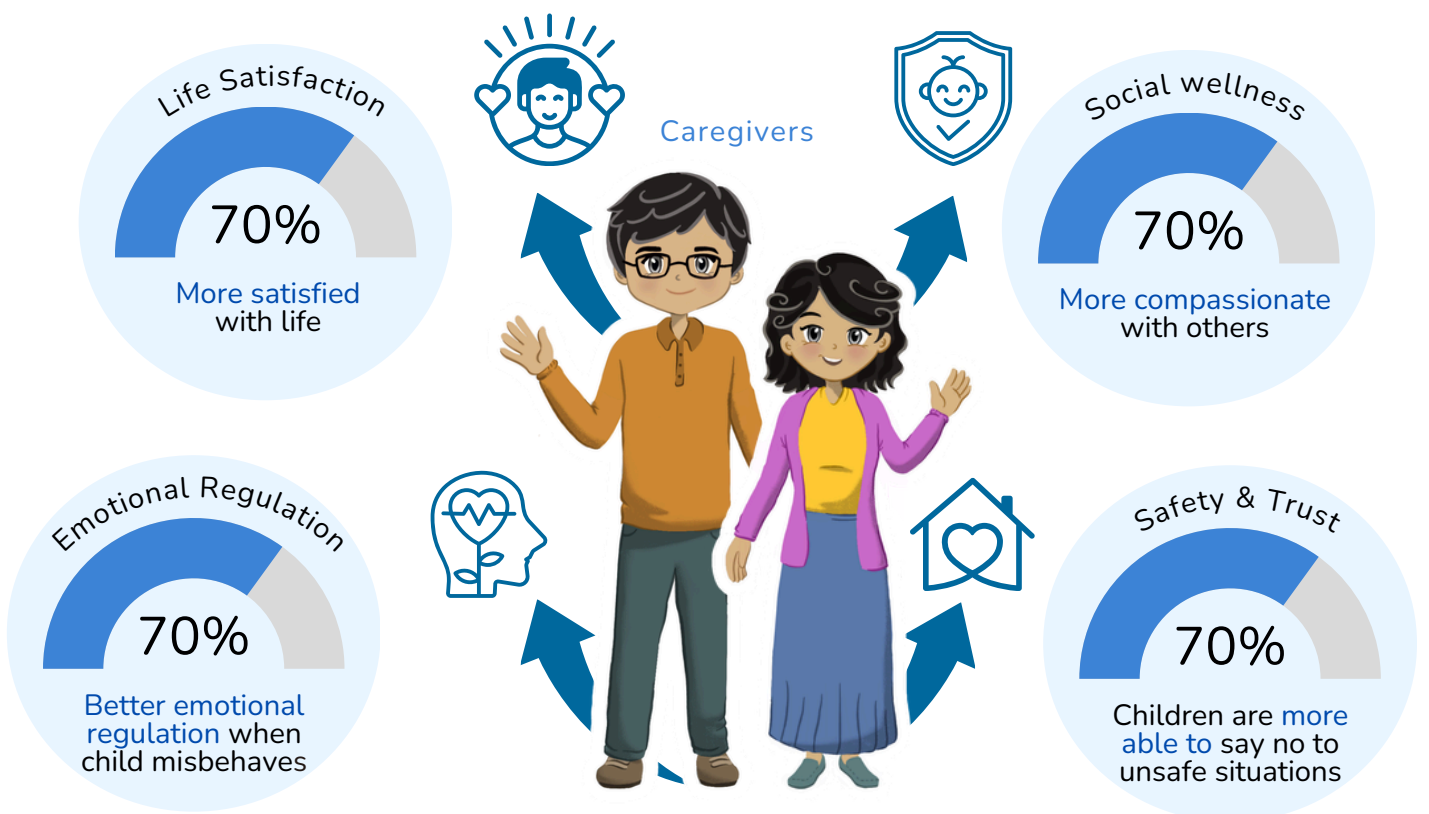
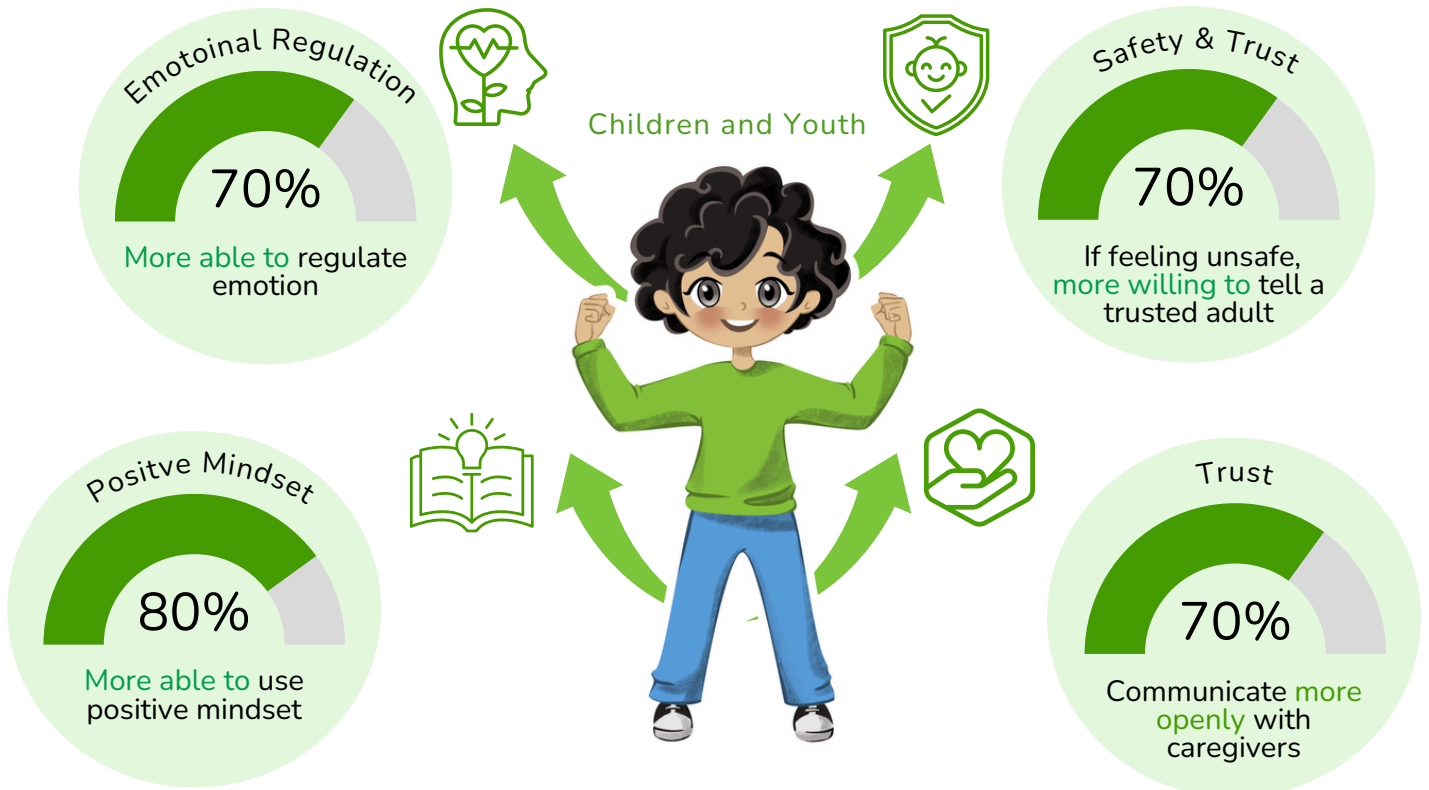
- Support children in setting personal boundaries
- Practice in becoming children's trusted adults
- Prevent, prepare for, respond to, and recover from risks
- Prepare a safety plan for risk reduction



Impact of SEED courses



Improved health and health behavior, emotional regulation, well-being, and safety



Become Our Partner

1

Share our vision and value

Aims to strengthen the inclusiveness flourishing of our community, especially those who face higher risks

2

Meet with Be Priceless

Understand the service users' needs and background

Co-design a partnership plan

Co-plan service dates, time, sections, targets, etc

3

4

Complete the Collaboration Agreement

Lesson Coordination

Recruit participants, distribute consent forms (provided by us), and share information

5

6

Long-term Partnership

Providing long-term follow-up service for participants to accommodate their needs and challenges of different developmental stages

Our 80+ partners

學校及大學



機構



Find out more



Contact us

www.bepriceless.org

seed@bepriceless.org

9373 4453

Disclaimer: This product is for informational purpose only and shall NOT be used for any political or unauthorized purposes. The content shall not replace the advice of professionals or the authorities. Always seek the advice and updated information from your local trusted sources. Be Priceless hereby disclaims all liabilities to any party for any direct, indirect or other consequential damages arising from any use of this product. In the event that there are any inconsistencies in the different language texts, the English version will prevail.